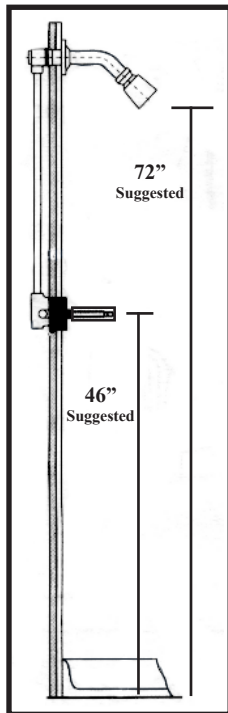


Legacy Brass, Inc

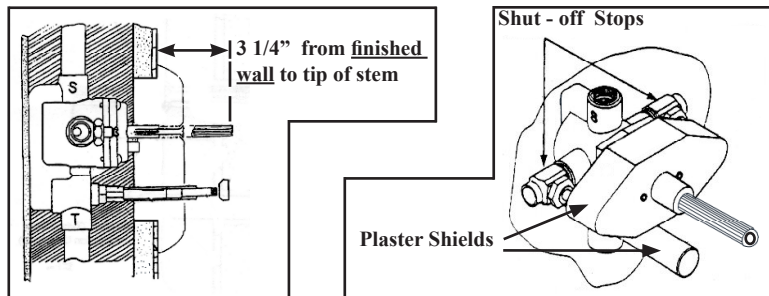
PRESSURE BALANCED SHOWER & TUB/SHOWER INSTRUCTION SHEET

It is recommended that only licensed plumbers with knowledge of installing decorative plumbing products be employed to install Legacy Brass products. Failure to do so may cause product malfunction and needless additional cost.

INSTALLER NOTICE: Do not use plumbers' putty to install this product. The use of plumbers' putty will void the homeowner's finish warranty. We recommend using a clear silicone sealant and teflon tape around threaded parts.



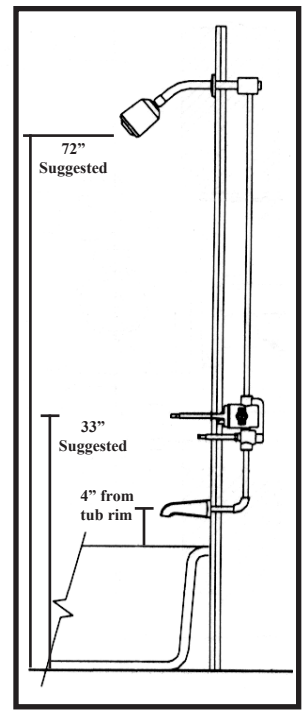
Shower Only



**Min. Operating Pressure: 20 psi
Max. Operating Pressure: 120 psi**

ROUGH INSTALLATION

- 1) Flush the supply lines before installing any valves.
- 2) Position the valve with the outlet marked "S" (Shower) pointed up.
- 3) The distance from the finished wall to the tip of the stem should be about 3 1/4". **The plaster shield must remain installed on the valve as a guide and a protection for tiling, plastering, etc.**
- 4) It is not necessary to remove the valve cartridge during normal soldering of connections. **Do not use excessive heat.**
- 5) Test the pipe joints by pressurizing both the "Hot" and "Cold" lines, otherwise the valve will not function.



Tub / Shower

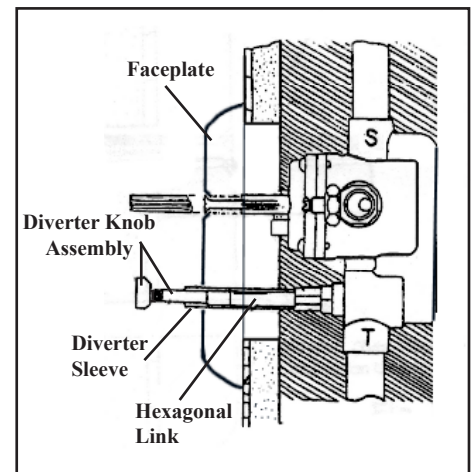
TRIM INSTALLATION

- 1) After the finish wall has been completed, remove the plastic shield(s) from the valve.
 - For Tub/Shower Sets --
- 2) Thread the diverter sleeve into the diverter cartridge.
 - For all sets --
- 3) Install the faceplate with the screws provided.
 - For Tub/Shower Sets --
- 4) Thread the Diverter Knob Assembly onto the diverter stem.
 - For all sets --
- 5) Insert the handle onto the broached stem. **(If necessary, cut the stem to allow the handle to seat just above the faceplate).** Secure the handle by tightening the set screw(s) with the allen wrench provided.

INSTALLER

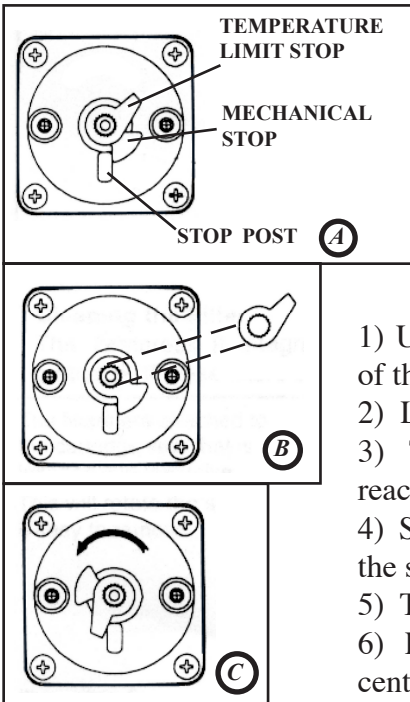
Important Cleaning Notice

Please refer to *Care & Maintenance Instructions* for complete cleaning instructions.
Never clean with abrasives, acids or detergents. Wipe with soft, damp cloth.



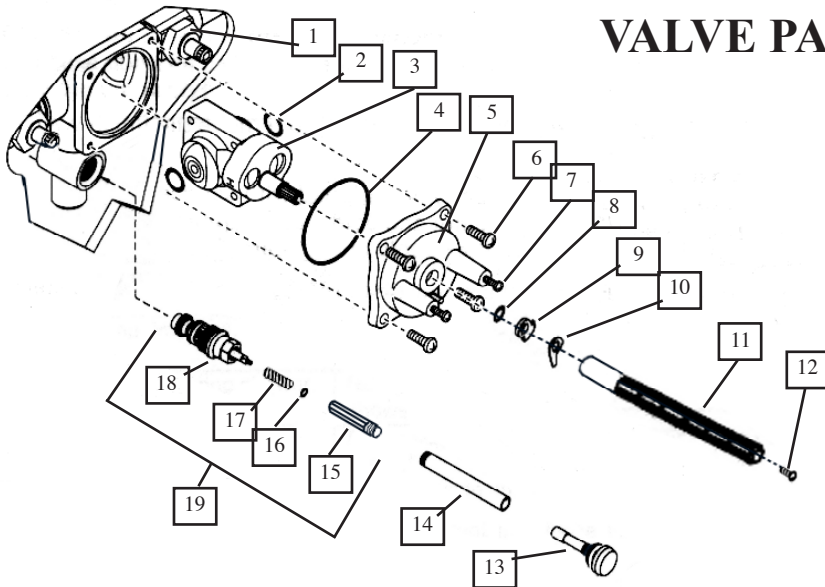
SETTING THE TEMPERATURE LIMIT STOP

It is possible to set the maximum hot water to a certain limit with this valve. It is best to do this at the time of rough installation, but it can be done at any time, even after final installation.



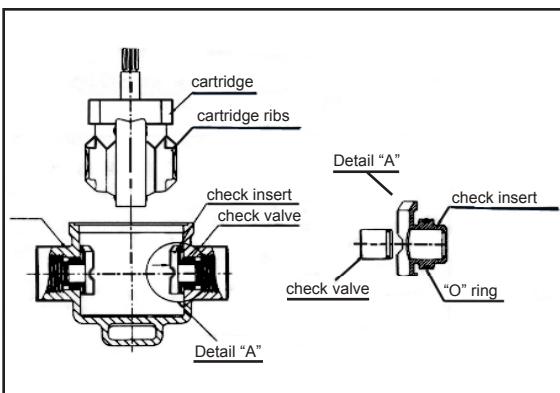
- 1) Unmount the handle stem by putting a thin, phillips-head screwdriver into the center of the stem, loosening the screw at the bottom and removing the long stem.
- 2) Lift off the "Temperature Limit Stop". **Do not remove the "Mechanical Stop"**.
- 3) Turn the valve stem counterclockwise until the desired water temperature is reached.
- 4) Slip the "Temperature Limit Stop" back onto the stem as shown. The short side of the stop will be against the left side of the "Stop Post".
- 5) Turn the water off.
- 6) Put the long, handle stem back onto the short stem and tighten the screw in the center of the stem.

VALVE PARTS



#	Description
1	Shut-off Stop Cartridge
2	Cartridge "O" Ring
3	Valve Cartridge
4	Cover "O" Ring
5	Valve Cover Plate
6	Cover Mounting Screw
7	Faceplate Screw (Finished)
8	Stem "O" Ring
9	Mechanical Stop
10	Temperature Limit Stop
11	Broached Handle Stem
12	Stem Mounting screw
13	Diverter Knob Assembly (Finished)
14	Diverter Sleeve (Finished)
15	Hexagonal Link
16	Diverter Stem "O" Ring
17	Spring
18	Diverter Cartridge
19	Complete Diverter Cartridge Ass'y

CHECK / FILTER MAINTENANCE



- 1) To clean the check valves, turn off the water and remove the cartridge from the valve body.
- 2) Press the top corner of the check/filter insert. This will rotate the insert and allow it to be pulled out of the side of the valve body.
- 3) Flush dirt and debris from the check/filter.
- 4) Apply grease to the "O" ring of the insert and place the insert back in the valve body. **Be sure that the beveled edge of the insert faces out.**
- 5) The insert should sit flush against the wall of the valve body when properly installed.